

## LED ceiling-recessed luminaire

Recessed LED downlight, one for one replacement for traditional 1x26W compact fluorescent downlights. Consistent light output with no shadowing. High efficacy, up to 80% energy saving compared with fluorescent light sources. 150mm cut-out – identical to traditional products. AMY LED can be installed into a wide range of ceiling types of 2-20 mm thickness. 3h emergency light. THD<25%.

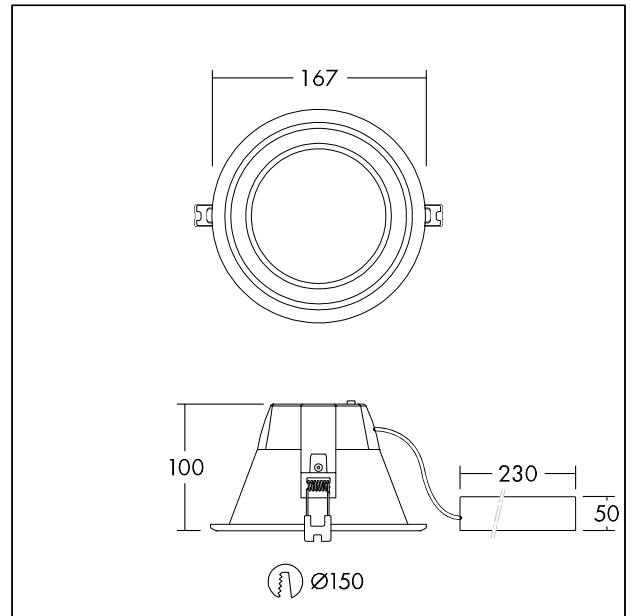
Body: Aluminium white finish (RAL 9003)

Diffuser: Polycarbonate (TPb construction)

Weight: 1.9 kg



TE\_AMY\_F\_E3\_150\_side.jpg



TE\_AMY\_M\_E3\_MED.wmf

## Light Distribution

## Emergency

All values marked with an \* are rated values. Connected electrical load and luminous flux are subject to an initial tolerance of +/- 10%, the most similar colour temperature is subject to an initial tolerance of +/- 150K. Unless stated otherwise, the values apply to an ambient temperature of 25°C.