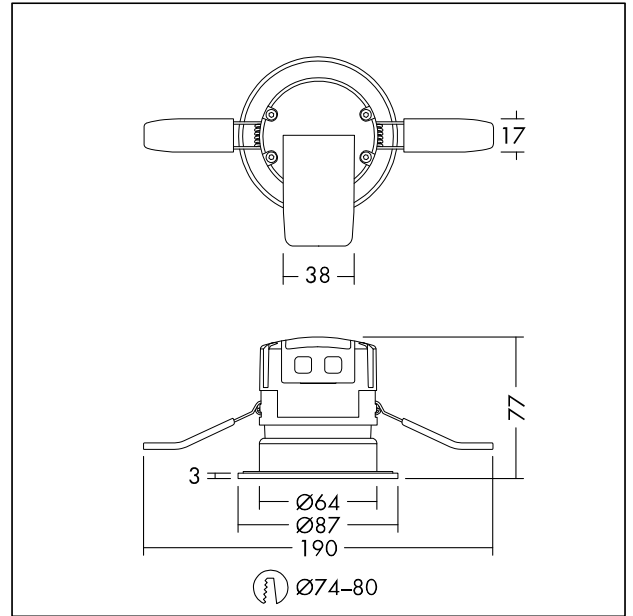


LED ceiling-recessed luminaire

Recessed IP65 fire rated downlight, including white bezel and lens with 38° beam angle. Highly efficient and economical downlight, fully fire-rated for 30, 60 & 90 minute ceilings. Adaptable light distribution by exchanging the 38° lens with a 24°/46° beam angle lens or a 15° wall wash optic (available as accessories). Lay insulation directly over the top of the product. Tool free and fast wiring due to the fully detachable connector and the press-fit terminal block enabling loop-in loop-out. Integrated LED driver suitable for use with leading-edge dimmer switches. Body: Aluminum heat sink & steel housing. Bezel trim: Aluminum die-cast. Lens: PMMA. Cover: PC, Weight: 0.3 kg



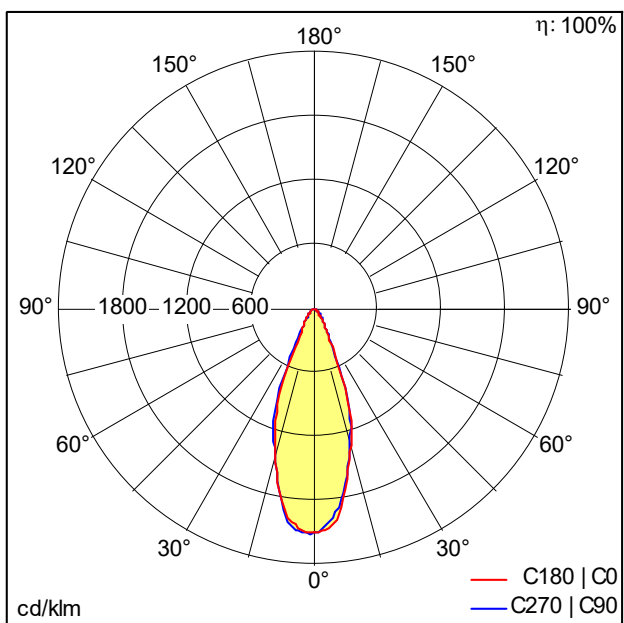
TE_FRED_F_70_persp.jpg



TE_FRED_M_FRD.wmf

Light Distribution

STD - standard



TE_FRED_LED_IP65_75_550_830_38_lens.ltd

- Light Source: LED
- Luminaire luminous flux*: 520 lm
- Luminaire efficacy*: 74 lm/W
- Colour Rendering Index min.: 80
- Correlated colour temperature*: 3000 Kelvin
- Chromaticity tolerance (initial MacAdam): 6
- Rated median useful life*:
L70 50000 h at 25 °C
- Ballast: 1x LED_Con
- Luminaire input power*: 7 W Power factor = 0.75
- Dimming: PCDCG dimmable to 5%
- Maintenance category CIE 97: D - Enclosed IP2X

All values marked with an * are rated values. Connected electrical load and luminous flux are subject to an initial tolerance of +/- 10%, the most similar colour temperature is subject to an initial tolerance of +/- 150K. Unless stated otherwise, the values apply to an ambient temperature of 25°C.